

BeFrank Sustainable Lifecycle

Q1 2026



Introduction

Investing in a lifecycle

Page 3

Markets

Financial markets

Page 4

Returns

Net return by age group

Page 5

Sustainable

Sustainable investing with impact

Page 8

Funds

Funds BeFrank Sustainable Lifecycle

Page 10



Investing in a lifecycle

In lifecycle investing, the investment risk is automatically reduced as the retirement date approaches. We do this by gradually reducing the proportion of the pension money that we invest in risky investments (such as equities) and allocating more to low-risk investments such as government bonds.

The lifecycle consists of three parts, also called building blocks:

- **Focus on growth**

This part aims to generate attractive returns. To accomplish this, we invest in the First Class Sustainable Return. The investment in this fund is managed by Triodos Investment Management and this fund invests in global equities.

- **Focus on growth and retirement**

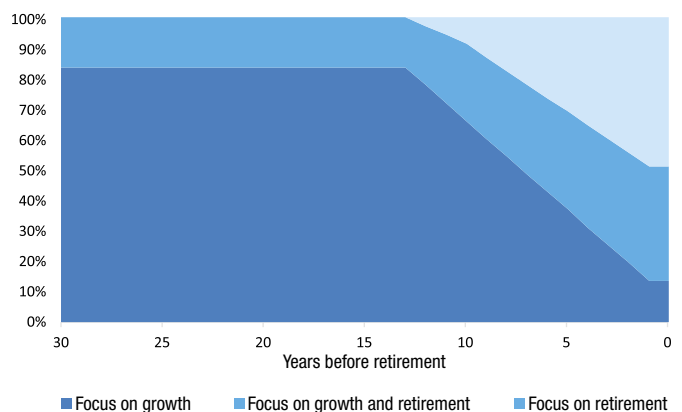
This part combines generating attractive returns and reducing the investment risk ready for retirement. In order to achieve this, we invest in the Triodos Euro Bond Impact Fund. With this fund, we invest in less risky asset classes such as corporate bonds with high credit ratings and government bonds.

- **Focus on retirement**

This part is intended to reduce interest rate risk. On retirement date, a benefit is purchased with the pension capital. The size of the pension benefit depends on a number of factors including the market interest rate at the time. If interest rates are low, more money is needed to buy the same pension benefit than when interest rates are high. The Liability Matching Funds reduce this interest rate risk. If interest rates fall, the returns generated by these funds increase. The reverse also applies. If interest rates rise, the value of investments decreases, but

because interest rates are higher, less money is required to purchase the same pension benefit. This is how we try to 'match' the purchase of pensions with interest rate movements. We use three bond funds with different interest rate sensitivity profiles (Liability Matching Funds M, L, XL and XXL) that invest in European government bonds to do this. These bond funds reduce the risk associated with lower market interest rates.

Fixed pension benefit neutral profile



Source: BeFrank



Financial markets

Lifecycle returns depend on the performance of financial markets.
How did markets perform over the last quarter?

The first quarter of 2026 began with a period characterized by robust economic activity and strong equity market performance, a trend that was progressively overshadowed by escalating geopolitical tensions and their subsequent impact on inflation. January saw strong but volatile global equity markets, buoyed by solid economic data, robust labor markets, and contained inflation. The US capture of Venezuelan President Nicolás Maduro initially raised concerns about oil supply, but markets were largely unaffected except for Venezuelan assets and some US oil firms.

As markets absorbed ongoing news about Venezuela, Greenland, and US tariffs, geopolitical uncertainty increased. A US-Iran conflict erupted in late February, escalating through March and resulting in the closure of the Strait of Hormuz. This caused global equity sell-offs and rising energy prices due to supply concerns, raising expectations for slower economic growth and higher inflation, especially in Europe and Asia. Although geopolitical uncertainty remained high, macroeconomic indicators in most countries presented a relatively benign picture during the first quarter of 2026.

On the monetary policy front, all major central banks, including the U.S. Federal Reserve, European Central Bank, Bank of England, and Bank of Japan, opted to keep their policy rates unchanged throughout Q1 2026. This 'wait-and-see' approach was adopted as they sought greater clarity on the potential ramifications of higher oil prices on both economic growth and inflation. Nevertheless, short-term rates rose sharply in March. Year-end 2026 policy rate forecasts increased by 85 basis points in the Euro Area and 60 basis points in the US. Higher interest rates and lower equity prices have tightened global financial conditions, which could further slow economic growth in the coming months.

In this context and despite a good start, global equity markets delivered negative returns over the first quarter of 2026, as rising geopolitical tensions and surging energy prices led to a sharp tightening of financial conditions. The MSCI AC World index declined by 1.3% (Net Return in EUR) over the quarter.

Sources: GSAM, MSCI, Bloomberg, and Refinitiv Eikon. Data as of end of March 2026.



Net return by age group

Fixed pension benefit

Very defensive

Return (%) (net)	3 months	Year to date	1 year
35 years	-0,3	-0,3	3,1
45 years	-0,3	-0,3	3,1
55 years	1,6	1,6	0,4
67 years	0,1	0,1	-2,5

Defensive

Return (%) (net)	3 months	Year to date	1 year
35 years	-0,2	-0,2	3,2
45 years	-0,2	-0,2	3,2
55 years	-0,3	-0,3	1,5
67 years	0,2	0,2	-2,3

Neutral

Return (%) (net)	3 months	Year to date	1 year
35 years	-0,2	-0,2	3,3
45 years	-0,2	-0,2	3,3
55 years	-0,2	-0,2	3,3
67 years	0,1	0,1	-2,1

Offensive

Return (%) (net)	3 months	Year to date	1 year
35 years	-0,2	-0,2	3,5
45 years	-0,2	-0,2	3,5
55 years	-0,2	-0,2	3,5
67 years	0,1	0,1	-2,1

Very offensive

Return (%) (net)	3 months	Year to date	1 year
35 years	-0,1	-0,1	3,6
45 years	-0,1	-0,1	3,6
55 years	-0,1	-0,1	3,6
67 years	0,1	0,1	-2,0

Net return by age group

Variable pension benefit reduced risk to 15%

Defensive - reduced risk to 15%

Return (%) (net)	3 months	Year to date	1 year
35 years	-0,2	-0,2	3,2
45 years	-0,2	-0,2	3,2
55 years	-0,3	-0,3	2,0
67 years	0,1	0,1	-2,0

Neutral - reduced risk to 15%

Return (%) (net)	3 months	Year to date	1 year
35 years	-0,2	-0,2	3,3
45 years	-0,2	-0,2	3,3
55 years	-0,2	-0,2	3,3
67 years	0,1	0,1	-2,0

Offensive - reduced risk to 15%

Return (%) (net)	3 months	Year to date	1 year
35 years	-0,2	-0,2	3,5
45 years	-0,2	-0,2	3,5
55 years	-0,2	-0,2	3,5
67 years	0,1	0,1	-2,0

Very offensive - reduced risk to 15%

Return (%) (net)	3 months	Year to date	1 year
35 years	-0,1	-0,1	3,6
45 years	-0,1	-0,1	3,6
55 years	-0,1	-0,1	3,6
67 years	0,1	0,1	-2,0

Variable pension benefit reduced risk to 30%

Neutral - reduced risk to 30%

Return (%) (net)	3 months	Year to date	1 year
35 years	-0,2	-0,2	3,3
45 years	-0,2	-0,2	3,3
55 years	-0,2	-0,2	3,3
67 years	0,0	0,0	-1,5

Net return by age group

Variable pension benefit reduced risk to 30%

Offensive - reduced risk to 30%

Return (%) (net)	3 months	Year to date	1 year
35 years	-0,2	-0,2	3,5
45 years	-0,2	-0,2	3,5
55 years	-0,2	-0,2	3,5
67 years	0,0	0,0	-1,5

Very offensive - reduced risk to 30%

Return (%) (net)	3 months	Year to date	1 year
35 years	-0,1	-0,1	3,6
45 years	-0,1	-0,1	3,6
55 years	-0,1	-0,1	3,6
67 years	0,0	0,0	-1,5

Variable pension benefit reduced risk to 45%

Offensive - reduced risk to 45%

Return (%) (net)	3 months	Year to date	1 year
35 years	-0,2	-0,2	3,5
45 years	-0,2	-0,2	3,5
55 years	-0,2	-0,2	3,5
67 years	0,1	0,1	-1,5

Very offensive - reduced risk to 45%

Return (%) (net)	3 months	Year to date	1 year
35 years	-0,1	-0,1	3,6
45 years	-0,1	-0,1	3,6
55 years	-0,1	-0,1	3,6
67 years	0,1	0,1	-1,5

Variable pension benefit reduced risk to 60%

Very offensive - reduced risk to 60%

Return (%) (net)	3 months	Year to date	1 year
35 years	-0,1	-0,1	3,6
45 years	-0,1	-0,1	3,6
55 years	-0,1	-0,1	3,6
67 years	0,1	0,1	-1,4

Sustainable investing with impact

Sustainability is a concept with multiple definitions. For BeFrank, it means that together with our asset managers we invest pension contributions within available contribution schemes in a responsible manner, with an emphasis on people, the environment and society.

In the Sustainable Lifecycle, we shape this with Triodos' 'impact investment strategies'. Impact investing is a method of sustainable investing that goes beyond other well-known ways such as 'best-in-class' and 'exclusions'. The following four basic principles apply to the composition of the investment portfolio:

- Targets companies that offer sustainable products and/or have sustainable business processes
- Screens destructive and exploitative industries (e.g., fossil fuels, arms)
- Assesses company ESG practices and sustainability policies
- Encourages company transparency and public disclosure

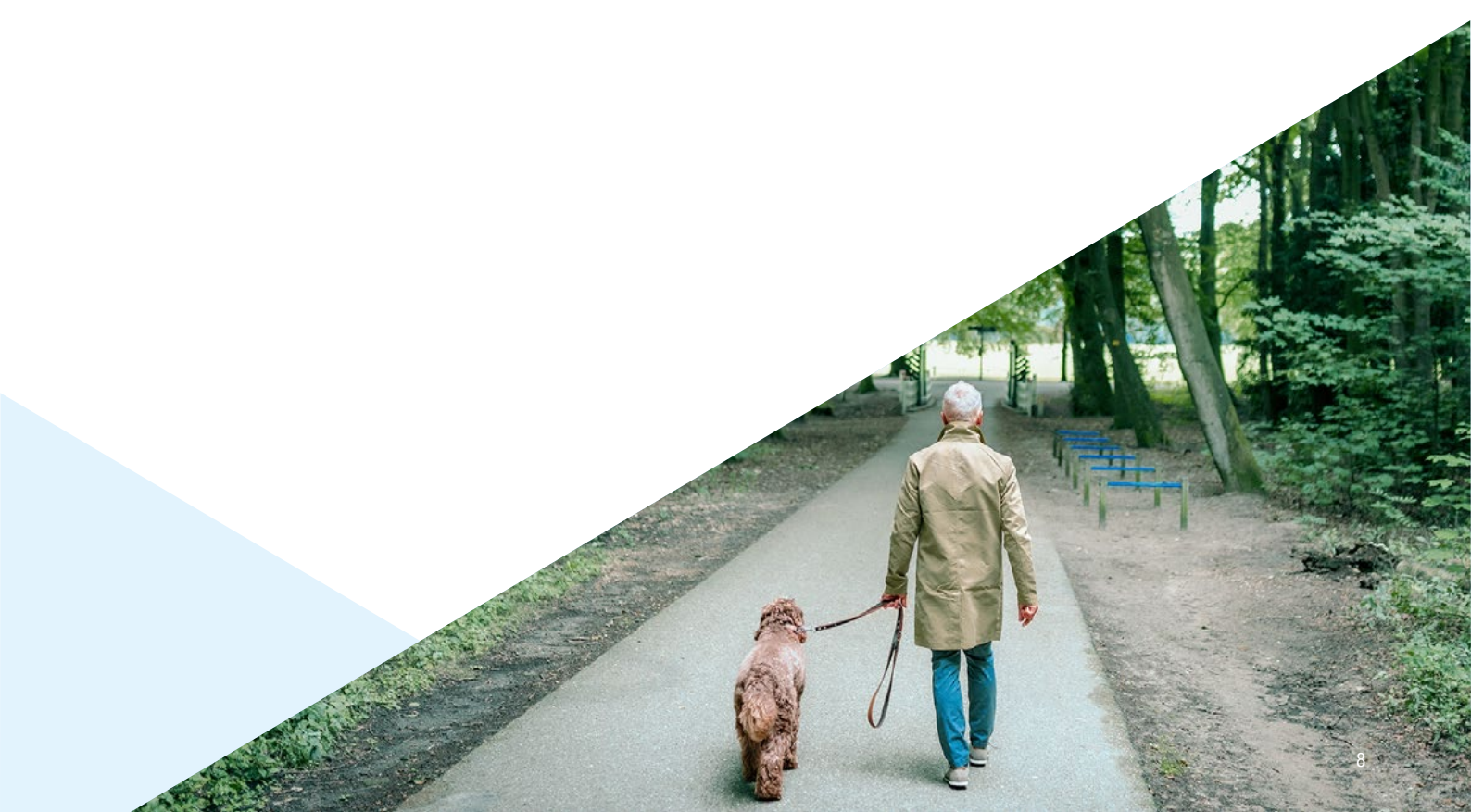
Transition themes

Triodos invests in equities and bonds of companies, institutions and projects that drive the transition to a sustainable society. Triodos focuses on five transition themes. These themes provide a comprehensive overview of the transitions the world needs to make to solve our most urgent sustainability challenges. Based on the challenges presented by global megatrends that Triodos believes will shape the future, they are at the heart of the investment and impact management approach.

The transition themes are:


- Wellbeing
- Societal
- Food
- Resource
- Energy

Every investment in the Triodos portfolios must materially contribute to the transition themes through its products, services, and/or business operating model. Additionally, to be eligible for investment, companies must meet with Triodos' process, product and precautionary minimum standards. Once companies are deemed eligible for investment, integrated financial and sustainability analysis is conducted to determine whether companies qualify as portfolio candidates. Triodos evaluates the company's financial value drivers and assess the potential impact of internal and external sustainability factors on future financial value, making the approach both solutions-focused and forward-looking.







My sustainability impact

At BeFrank, your pension is invested sustainably. But just how sustainable are those investments? That differs from person to person and depends on the choices you make. On your personal pension page, [My Sustainability Impact](#) shows how your investments score and the impact you are making with them. Are you an employer? Then you can view the sustainability impact of the assets invested in the pension scheme via the [employer portal](#).

 **My sustainability impact** →

View how sustainable your investments are

 ESG score  CO₂ emissions

 Hazardouswaste  Non-recyclable waste

This dashboard shows an indication of the ESG score and the savings in CO₂ emissions, hazardous waste and non-recyclable waste. The personal pension page and the employer portal explain how these figures are measured. You can read more about sustainable investing in the [Sustainable Investment Policy](#).

Source: BeFrank



Funds BeFrank Sustainable Lifecycle

First Class Sustainable Return Fund (NL)

The investments in the First Class Sustainable Return Fund (NL) are managed by Triodos Investment Management. In the portfolio, Triodos Investment Management aims to achieve positive impact and competitive returns from a diversified portfolio of equities issued by large-, mid- and small-cap companies that offer sustainable solutions. The integrated financial and sustainability analysis puts impact at the heart of the stock selection process. Triodos' rigorous screening based on companies' contribution to their transition themes and compliance with their minimum standards currently results in an investable universe consisting of around 400 mission-oriented companies, compared to around 6,600 companies in the broad investment universe.

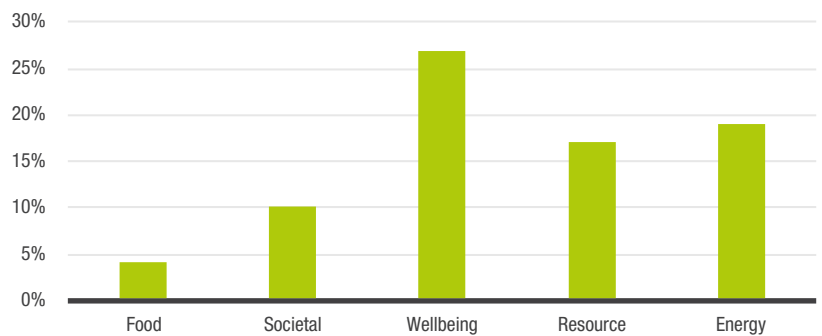
Return (%) (net)	3 months	Year to date	1 year
First Class Sustainable Return Fund (NL)	-0,05	-0,05	-3,76
MSCI World Index EUR	-1,71	-1,71	11,74

As impact investing does not intend to invest in line with the benchmark or to outperform the benchmark, the composition of the investments will differ significantly from the reference benchmark and therefore there may be major differences between the fund's returns and the reference benchmark.

Statistics

ISIN code	NL0015001HS4
Inception date	21/08/2023
Ongoing charges	0,32%

Exposure to transition themes



Source: Triodos Investment Management



Triodos Euro Bond Impact Fund

The Triodos Euro Bond Impact Fund aims to generate positive impact and stable income from a concentrated portfolio of investment-grade, euro-denominated bonds issued by listed companies, semi-public institutions, and EU member state governments. Integrated financial and sustainability analysis makes impact the cornerstone of the bond selection process. Triodos' strict screening based on issuers' contribution to their transition themes and compliance with their minimum standards, currently results in an investable universe comprised of approximately 1,500 mission-aligned bonds, compared to over 5,000 in the fund's reference index.

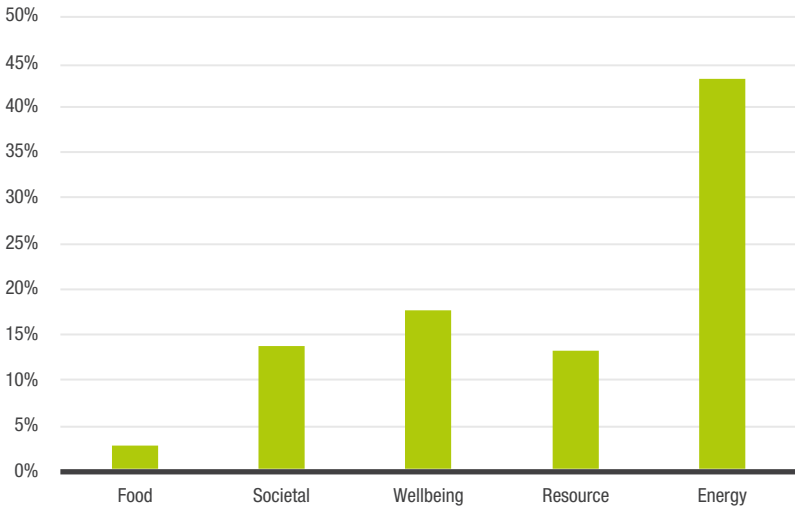
Return (%) (net)	3 months	Year to date	1 year	3 years (ann.)
Triodos Euro Bond Impact Fund (I-II-cap)	-0,95	-0,95	1,18	2,84
Compounded Benchmark Triodos Euro Bond Impact Fund	-0,89	-0,89	1,73	3,64

As impact investing does not intend to invest in line with the benchmark or to outperform the benchmark, the composition of the investments will differ significantly from the reference benchmark and therefore there may be major differences between the fund's returns and the reference benchmark.

Statistics

ISIN code	LU1782629122
Inception date	07/09/2018
Ongoing charges	0,36%

Exposure to transition themes



Source: Triodos Investment Management



Liability Matching funds

The four Liability Matching funds have different interest rate sensitivity profiles (Liability Matching Fund (M) (NL), Liability Matching Fund (L) (NL), Liability Matching Fund (XL) (NL) and Liability Matching Fund (XXL) (NL)). They invest in a combination of euro-denominated interest rate swaps, high-quality money market funds, high-quality government bonds and cash. The interest rate sensitivity of the funds is enhanced with interest rate swaps and bond futures. The Liability Matching Fund (M) (NL) strives for an interest rate sensitivity of about 4 years and (L) (NL), (XL) (NL) and (XXL) (NL) of approximately 20, 40 and 42 years, respectively. The four Liability Matching funds have different interest rate profiles that are composed in such a way that, used in combination, they can offer the best possible match in the period leading up to retirement.

What did the interest rate do?

In most major developed markets, interest rates rose on the short end of the yield curve. This was the result of joint US and Israeli attacks on Iran and persistent regional tensions. Consequently, concerns increased regarding rising global inflation, driven primarily by rising energy prices. The 2-year rate rose by 57 basis points, the 10-year rate by 13 basis points, while the 50-year rate actually fell by 36 basis points.

European government bonds saw widening swap spreads, with countries like Germany and the Netherlands outperforming countries with lower credit ratings such as Italy and France. This increase in swap spreads occurred primarily on the long end of the curve.



Liability Matching Fonds M-T

Return (%) (net)	3 months	Year to date	1 year	3 years (ann.)
Liability Matching Fund M-T	-0,8	0,8	0,2	2,6
Benchmark	-0,8	0,8	0,1	2,1

Statistics

ISIN code	NL0013040348
Inception date	November 2018
Ongoing charges	0,15%

Liability Matching Fonds L-T

Return (%) (net)	3 months	Year to date	1 year	3 years (ann.)
Liability Matching Fund L-T	1,5	1,5	-7,0	-0,6
Benchmark	2,2	2,2	-7,2	-1,2

Statistics

ISIN code	NL0013040355
Inception date	November 2018
Ongoing charges	0,15%

Liability Matching Fonds XL-T

Return (%) (net)	3 months	Year to date	1 year	3 years (ann.)
Liability Matching Fonds XL-T	11,1	11,1	-13,1	-6,9
Benchmark	12,3	12,3	-13,4	-7,6

Statistics

ISIN code	NL0013040363
Inception date	November 2018
Ongoing charges	0,15%

Liability Matching Fonds XXL-T

Return (%) (net)	3 months	Year to date	1 year	3 years (ann.)
Liability Matching Fonds XXL-T	0,4	0,4	-15,4	N.v.t.
Benchmark	0,5	0,5	-15,7	N.v.t.

Statistics

ISIN code	NL0015001QX5
Inception date	February 2024
Ongoing charges	0,15%

Source: GSAM

Disclaimer

The purpose of this report is to provide insight into the investments within the lifecycle of BeFrank and is not an investment advice. The performance overview has been compiled with care by BeFrank. No rights can be derived from this information. The returns in the report are after deduction of the fund costs but exclude the management costs charged by BeFrank.

